



EF500 Current Design



- Equipment arranged to provide complete access for operational and maintenance activities.
- Footprint: 18 ft. x 50 in. x 78 in.
- Unit can be provided in shipping container (as shown), flat-bed deck-over trailer or foundation mounted.

(design details on page 2)

EliteFlow Filtration Systems Core Advantages:

- Separator battery removes heavy suspended solids prior to disc filtration.
- Disc filtration technology that utilizes a pressure sensed and time controlled automated self cleaning process.
- Control panel featuring real time visual system information and supervisor control through a Human Machine Interface (HMI) screen.

Filtration System Models:

- EF-200 (up to 210 gpm / 5 bpm.)
- EF-500 (up to 500 gpm / 12 bpm.)

Disc Filtration:

- Micron options;
400, 200, 130, 100, 70, 55, 40, 20
- Discs are color coded by size.

Why Select EliteFlow

- Eliminate costs associated with traditional disposable filters.
- Increase efficiency through continuous filtered water output flow during the disc self-cleaning process.
- Reduce labor requirements and improve safety related incidents.

For Additional Information, Please Contact:

Shawn Milliron
(814) 952-2784
e-mail: smilliron@eliteflow.com

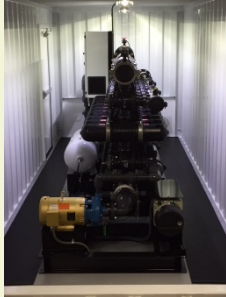
OUR MISSION:

"... PROVIDE OUR CUSTOMERS WITH THE MOST RELIABLE, AUTOMATED, SELF-CLEANING WATER FILTRATION SYSTEMS ..."



EF500 Design Details

- Complete access to filtration system.
- Man door with E-bar.
- Dual lighting provides excellent illumination.



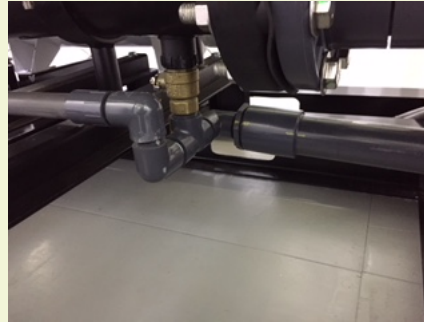
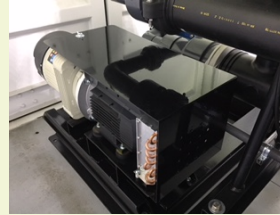
- Control panel positioned with pressure gauges installed at point of use.

- Control valves mounted for accessibility.

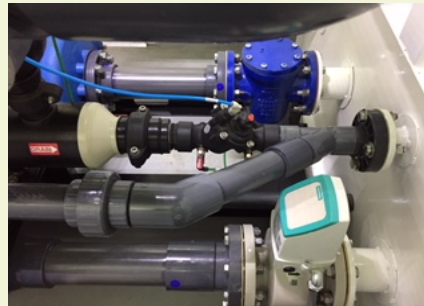


- Tubing color coded to industry standards and spiral wrapped for protection.

- Air system mounted for easy service.
- Guard supplied to protect aftercooler unit.



- Clean out / cold weather water drain line installed beneath filtration system.
- Ball valves provide drain control and eliminate spills.



- All internal connections are pipe.
- Feed pump basket strainer on inlet line.
- Flow rate measured on outlet line.

Standard Connections For Operation

Water:

- Inlet and Outlet connections are 4" and provided with ball valve and cam lock hose fitting.
- The waste line connection is 2" and provided with ball valve and cam lock hose fitting.
- The clean out / cold weather water drain line is 2" schedule 80 pipe.



Electrical:

- Receptacle provided is Appleton-Powertite ADR1034RS*, 100 amp, 3 wire, 4 pole with grounding style 2.
- The EF-500 requires 480 volt, 3-phase, 60 amp service.
- The EF-200 requires 480 volt, 3-phase, 50 amp service.

* Receptacle is Reverse Service (RS)